

# Lecture 0

## Spatio-temporal data

---

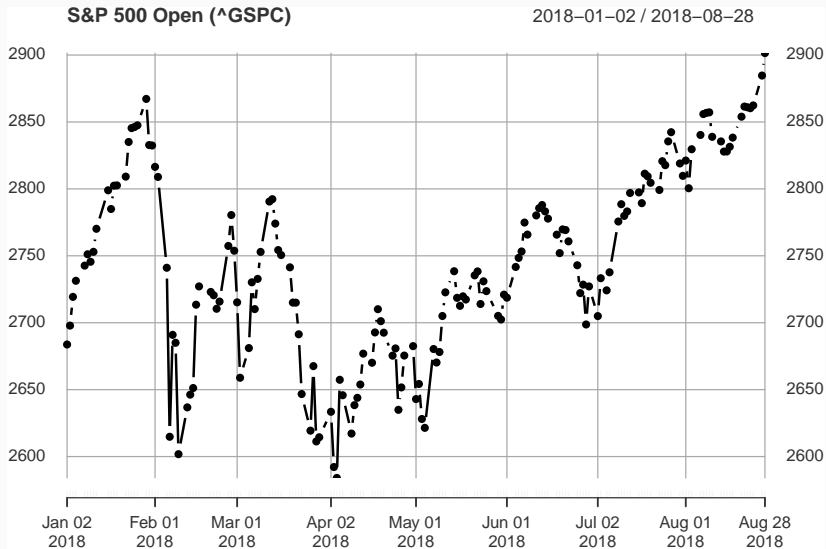
Colin Rundel

8/28/2018

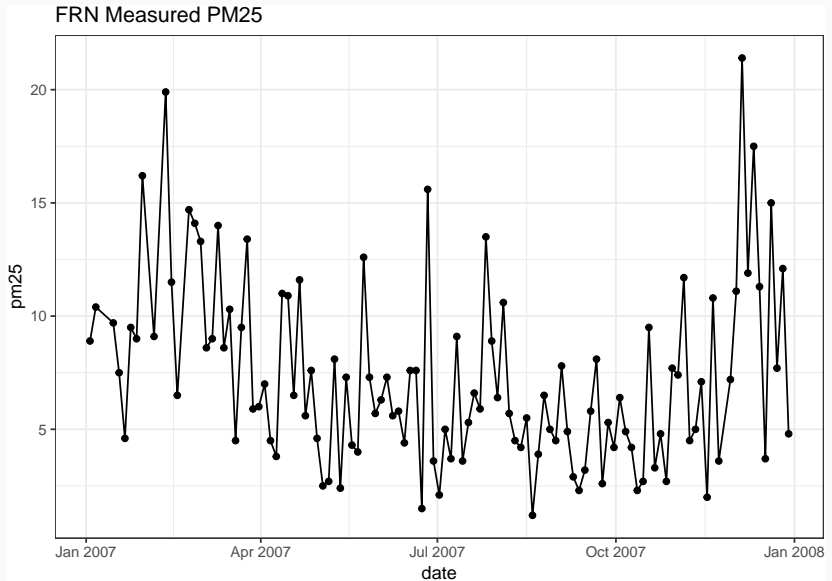
## Spatio-temporal data

---

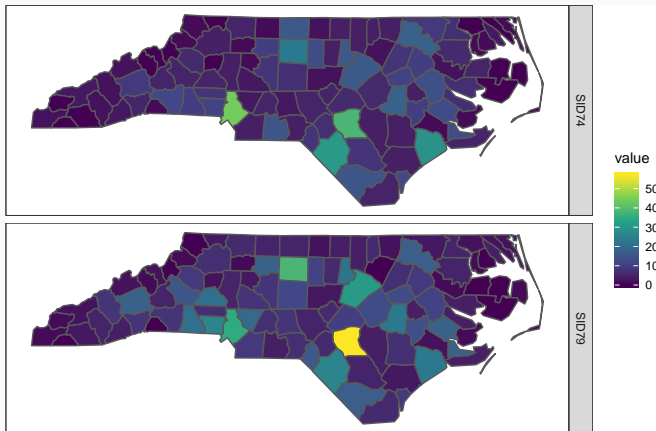
# Time Series Data - Discrete



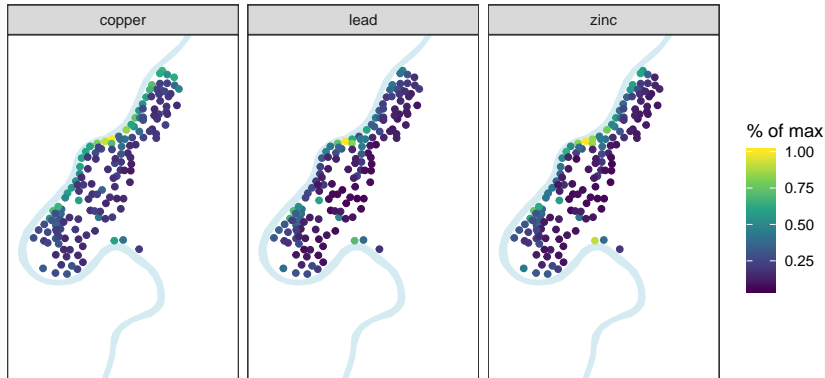
# Time Series Data - Continuous



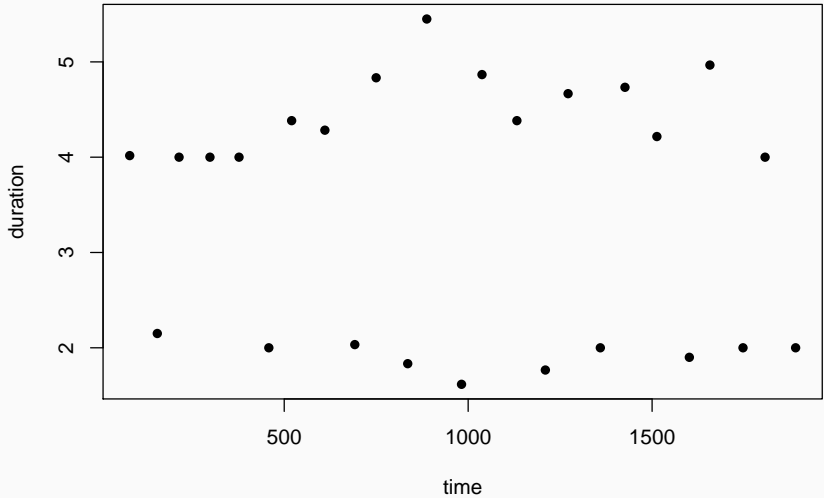
# Spatial Data - Areal



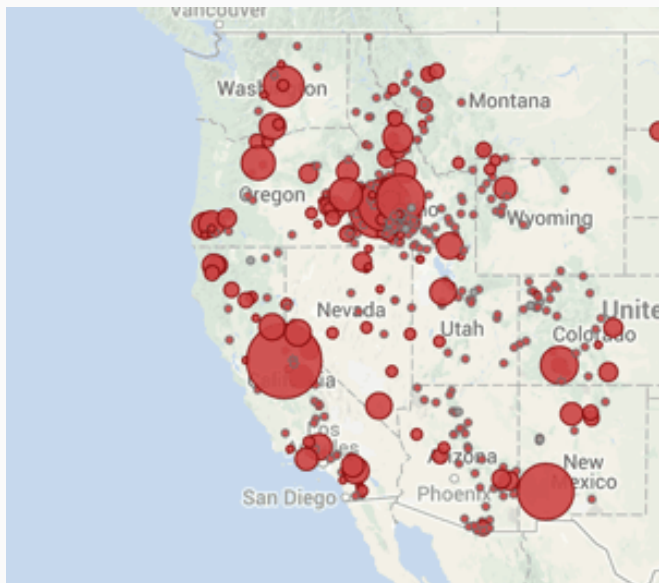
## Meuse River



## Old Faithful Eruption Duration



## Point Pattern Data - Space





# Point Pattern Data - Space + Time

