

Lecture 13

Gaussian Process Models - Part 2

3/06/2018

EDA and GPs

When fitting a Gaussian process model, it is often difficult to fit the covariance parameters (hard to identify). Today we will discuss some EDA approaches for getting a sense of the values for the scale, range and nugget parameters.

When fitting a Gaussian process model, it is often difficult to fit the covariance parameters (hard to identify). Today we will discuss some EDA approaches for getting a sense of the values for the scale, range and nugget parameters.

From the spatial modeling literature the typical approach is to examine an *empirical variogram*, first we will define the *theoretical variogram* and its connection to the covariance.

Variogram

When fitting a Gaussian process model, it is often difficult to fit the covariance parameters (hard to identify). Today we will discuss some EDA approaches for getting a sense of the values for the scale, range and nugget parameters.

From the spatial modeling literature the typical approach is to examine an *empirical variogram*, first we will define the *theoretical variogram* and its connection to the covariance.

Variogram:

$$2\gamma(t_i, t_j) = \text{Var}(Y(t_i) - Y(t_j))$$

where $\gamma(t_i, t_j)$ is known as the semivariogram.

Some Properties of the theoretical Variogram / Semivariogram

- are non-negative

$$\gamma(t_i, t_j) \geq 0$$

Some Properties of the theoretical Variogram / Semivariogram

- are non-negative

$$\gamma(t_i, t_j) \geq 0$$

- are equal to 0 at distance 0

$$\gamma(t_i, t_i) = 0$$

Some Properties of the theoretical Variogram / Semivariogram

- are non-negative

$$\gamma(t_i, t_j) \geq 0$$

- are equal to 0 at distance 0

$$\gamma(t_i, t_i) = 0$$

- are symmetric

$$\gamma(t_i, t_j) = \gamma(t_j, t_i)$$

Some Properties of the theoretical Variogram / Semivariogram

- are non-negative

$$\gamma(t_i, t_j) \geq 0$$

- are equal to 0 at distance 0

$$\gamma(t_i, t_i) = 0$$

- are symmetric

$$\gamma(t_i, t_j) = \gamma(t_j, t_i)$$

- if there is no dependence then

$$2\gamma(t_i, t_j) = \text{Var}(Y(t_i)) + \text{Var}(Y(t_j)) \quad \text{for all } i \neq j$$

Some Properties of the theoretical Variogram / Semivariogram

- are non-negative

$$\gamma(t_i, t_j) \geq 0$$

- are equal to 0 at distance 0

$$\gamma(t_i, t_i) = 0$$

- are symmetric

$$\gamma(t_i, t_j) = \gamma(t_j, t_i)$$

- if there is no dependence then

$$2\gamma(t_i, t_j) = \text{Var}(Y(t_i)) + \text{Var}(Y(t_j)) \quad \text{for all } i \neq j$$

- if the process *is not* stationary

$$2\gamma(t_i, t_j) = \text{Var}(Y(t_i)) + \text{Var}(Y(t_j)) - 2 \text{Cov}(Y(t_i), Y(t_j))$$

Some Properties of the theoretical Variogram / Semivariogram

- are non-negative

$$\gamma(t_i, t_j) \geq 0$$

- are equal to 0 at distance 0

$$\gamma(t_i, t_i) = 0$$

- are symmetric

$$\gamma(t_i, t_j) = \gamma(t_j, t_i)$$

- if there is no dependence then

$$2\gamma(t_i, t_j) = \text{Var}(Y(t_i)) + \text{Var}(Y(t_j)) \quad \text{for all } i \neq j$$

- if the process *is not* stationary

$$2\gamma(t_i, t_j) = \text{Var}(Y(t_i)) + \text{Var}(Y(t_j)) - 2 \text{Cov}(Y(t_i), Y(t_j))$$

- if the process *is* stationary

$$2\gamma(t_i, t_j) = 2\text{Var}(Y(t_i)) - 2 \text{Cov}(Y(t_i), Y(t_j))$$

Empirical Semivariogram

We will assume that our process of interest is stationary, in which case we will parameterize the semivariogram in terms of $h = |t_i - t_j|$.

Empirical Semivariogram:

$$\hat{\gamma}(h) = \frac{1}{2N(h)} \sum_{|t_i - t_j| \in (h - \epsilon, h + \epsilon)} (Y(t_i) - Y(t_j))^2$$

Empirical Semivariogram

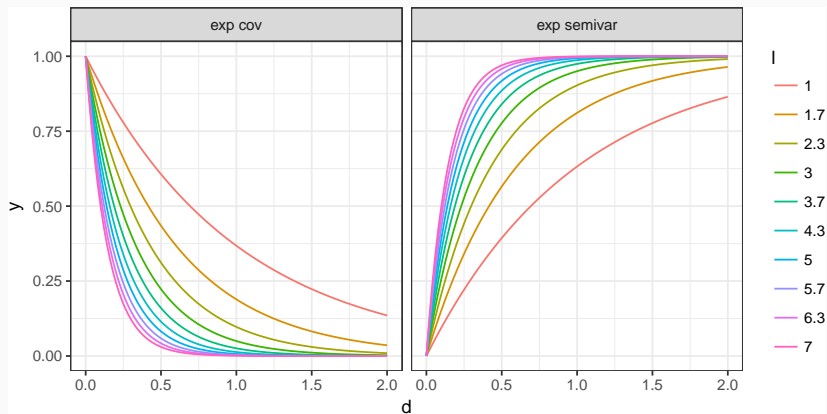
We will assume that our process of interest is stationary, in which case we will parameterize the semivariogram in terms of $h = |t_i - t_j|$.

Empirical Semivariogram:

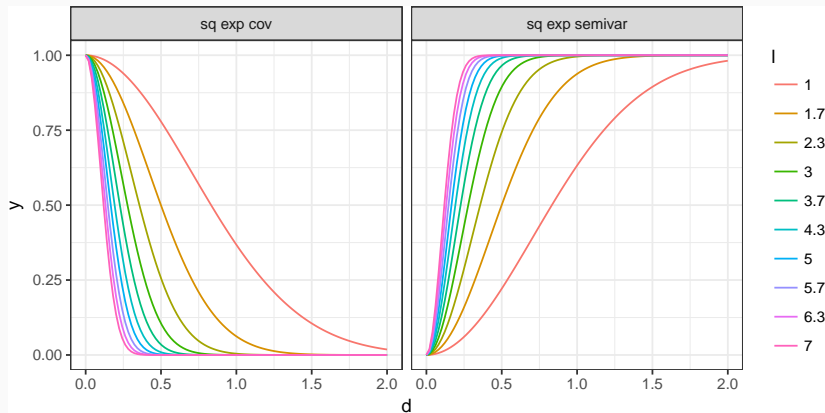
$$\hat{\gamma}(h) = \frac{1}{2N(h)} \sum_{|t_i - t_j| \in (h - \epsilon, h + \epsilon)} (Y(t_i) - Y(t_j))^2$$

Practically, for any data set with n observations there are $\binom{n}{2} + n$ possible data pairs to examine. Each individually is not very informative, so we aggregate into bins and calculate the empirical semivariogram for each bin.

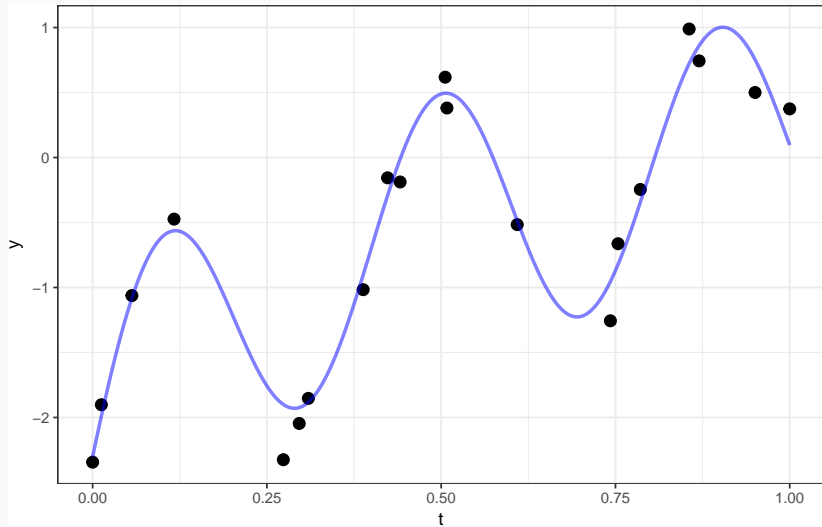
Covariance vs Semivariogram - Exponential



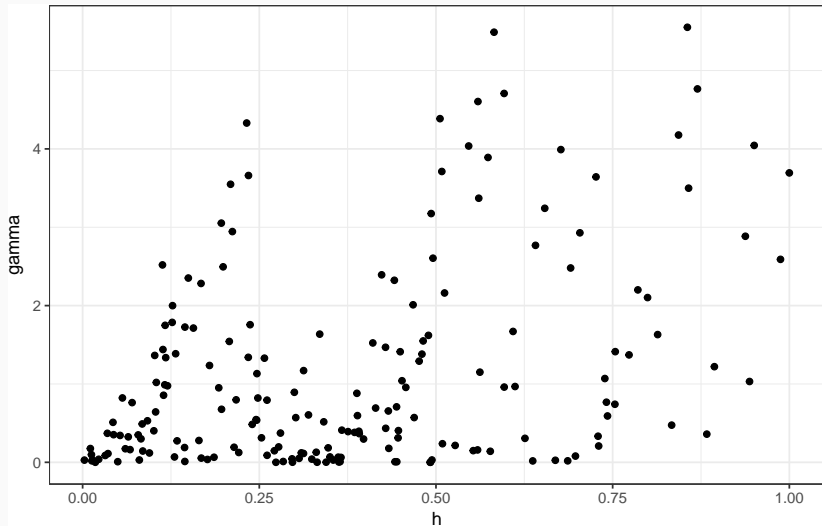
Covariance vs Semivariogram - Square Exponential



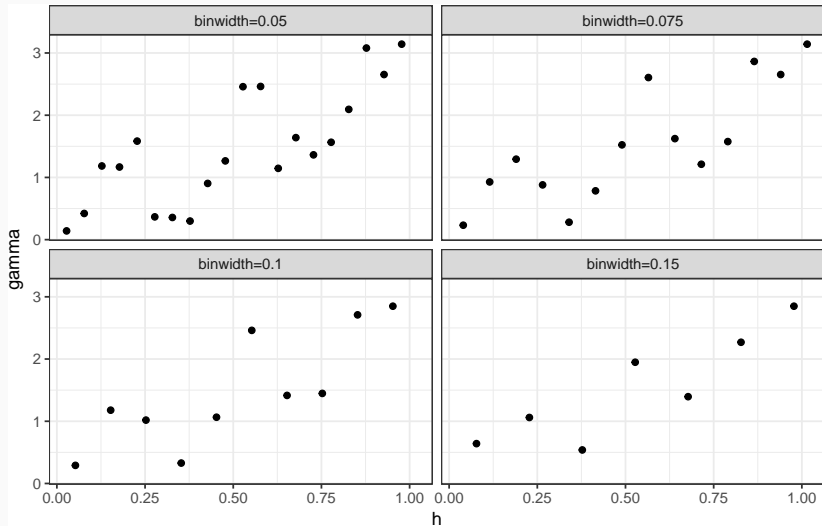
From last time



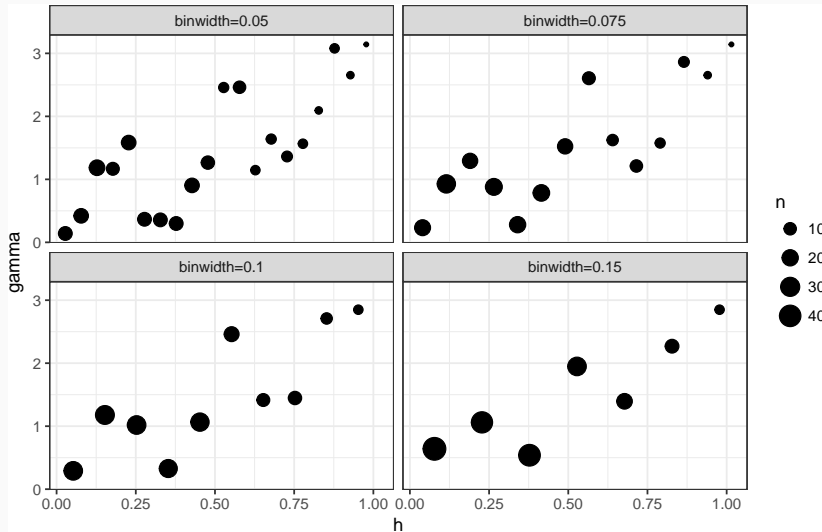
Empirical semivariogram - no bins / cloud



Empirical semivariogram (binned)



Empirical semivariogram (binned + n)



Theoretical vs empirical semivariogram

After fitting the model last time we came up with a posterior median of $\sigma^2 = 1.89$ and $l = 5.86$ for a square exponential covariance.

Theoretical vs empirical semivariogram

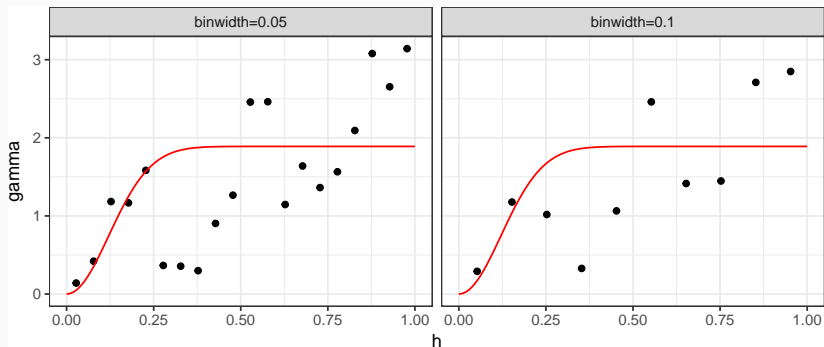
After fitting the model last time we came up with a posterior median of $\sigma^2 = 1.89$ and $l = 5.86$ for a square exponential covariance.

$$\begin{aligned}Cov(h) &= \sigma^2 \exp(- (hl)^2) \\ \gamma(h) &= \sigma^2 - \sigma^2 \exp(- (hl)^2) \\ &= 1.89 - 1.89 \exp(- (5.86 h)^2)\end{aligned}$$

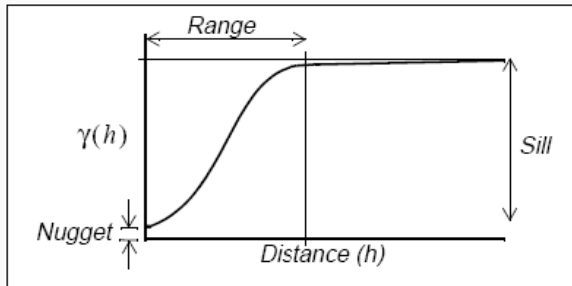
Theoretical vs empirical semivariogram

After fitting the model last time we came up with a posterior median of $\sigma^2 = 1.89$ and $l = 5.86$ for a square exponential covariance.

$$\begin{aligned}Cov(h) &= \sigma^2 \exp(- (hl)^2) \\ \gamma(h) &= \sigma^2 - \sigma^2 \exp(- (hl)^2) \\ &= 1.89 - 1.89 \exp(- (5.86 h)^2)\end{aligned}$$

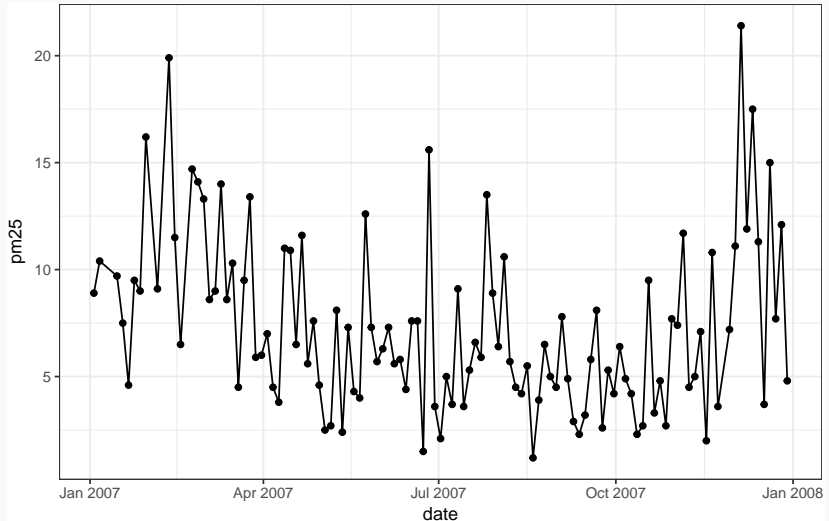


Variogram features



PM2.5 Example

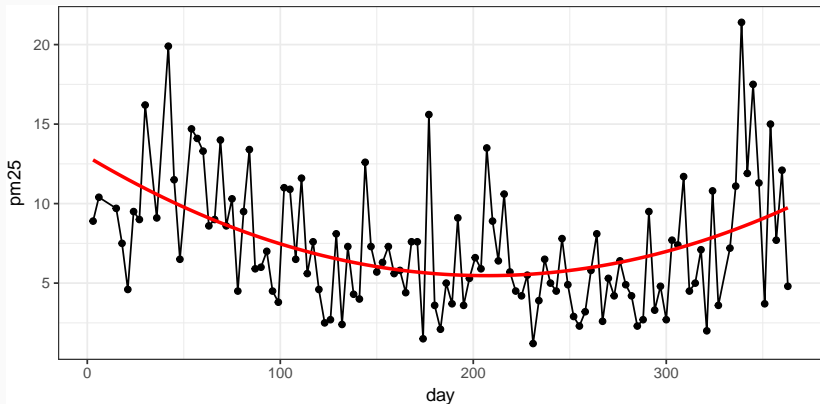
Measured PM2.5 data from an EPA monitoring station in Columbia, NJ.



FRN Data

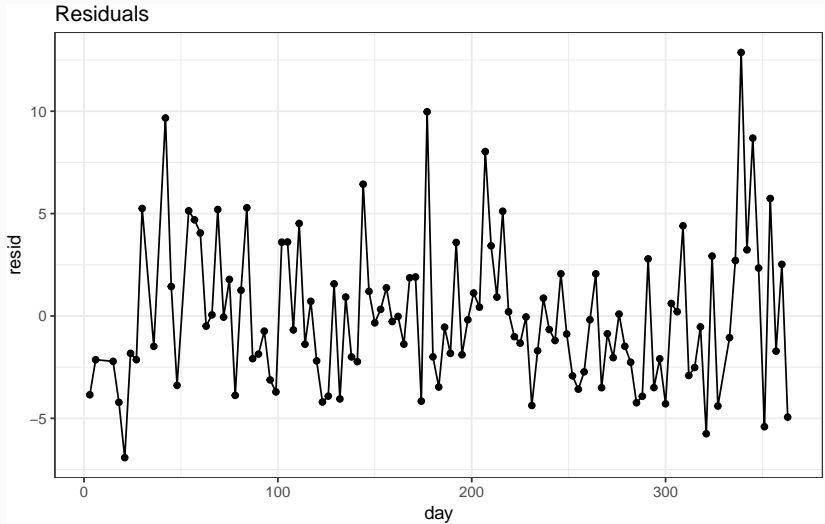
site	latitude	longitude	pm25	date	day
230031011	46.682	-68.016	8.9	2007-01-03	3
230031011	46.682	-68.016	10.4	2007-01-06	6
230031011	46.682	-68.016	9.7	2007-01-15	15
230031011	46.682	-68.016	7.5	2007-01-18	18
230031011	46.682	-68.016	4.6	2007-01-21	21
230031011	46.682	-68.016	9.5	2007-01-24	24
230031011	46.682	-68.016	9.0	2007-01-27	27
230031011	46.682	-68.016	16.2	2007-01-30	30
230031011	46.682	-68.016	9.1	2007-02-05	36
230031011	46.682	-68.016	19.9	2007-02-11	42
230031011	46.682	-68.016	11.5	2007-02-14	45
230031011	46.682	-68.016	6.5	2007-02-17	48
230031011	46.682	-68.016	14.7	2007-02-23	54
230031011	46.682	-68.016	14.1	2007-02-26	57
230031011	46.682	-68.016	13.3	2007-03-01	60
230031011	46.682	-68.016	8.6	2007-03-04	63
230031011	46.682	-68.016	9.0	2007-03-07	66
230031011	46.682	-68.016	14.0	2007-03-10	69
230031011	46.682	-68.016	8.6	2007-03-13	72
230031011	46.682	-68.016	10.3	2007-03-16	75

Mean Model

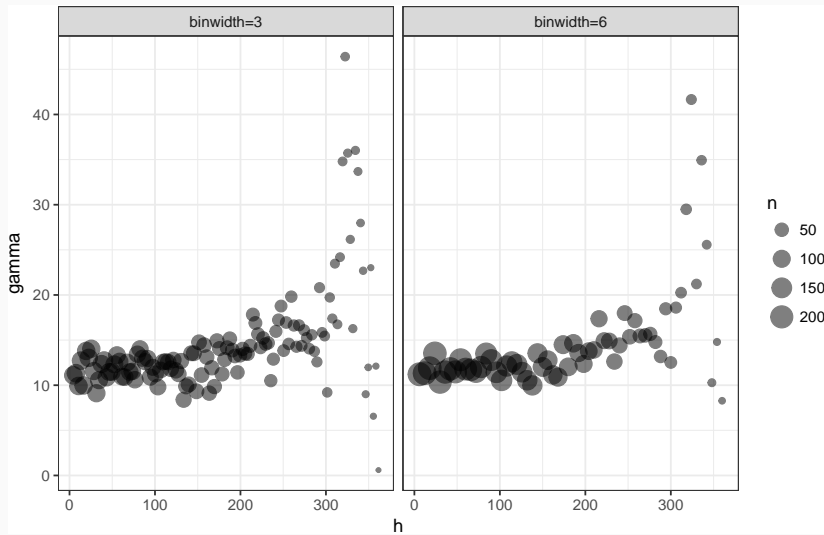


```
##  
## Call:  
## lm(formula = pm25 ~ day + I(day^2), data = pm25)  
##  
## Coefficients:  
## (Intercept)          day      I(day^2)  
## 12.9644351    -0.0724639    0.0001751  
##
```

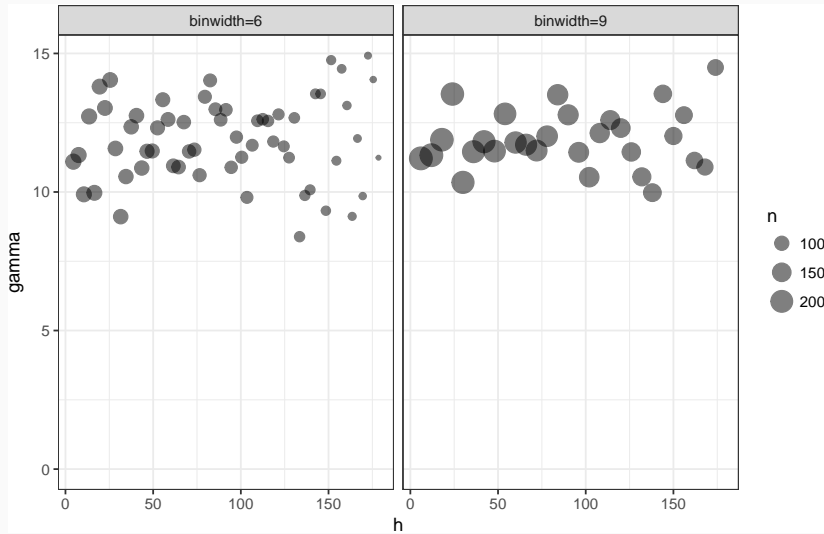
Detrended Residuals



Empirical Variogram



Empirical Variogram



What does the model we are trying to fit actually look like?

What does the model we are trying to fit actually look like?

$$y(t) = \mu(t) + w(t) + \epsilon(t)$$

where

$$\boldsymbol{\mu}(\mathbf{t}) = \beta_0 + \beta_1 \mathbf{t} + \beta_2 \mathbf{t}^2$$

$$\mathbf{w}(\mathbf{t}) \sim \mathcal{GP}(0, \boldsymbol{\Sigma})$$

$$\epsilon(t) \sim \mathcal{N}(0, \sigma_w^2)$$

```
gp_exp_model = "model{
  y ~ dnorm(mu, inverse(Sigma))

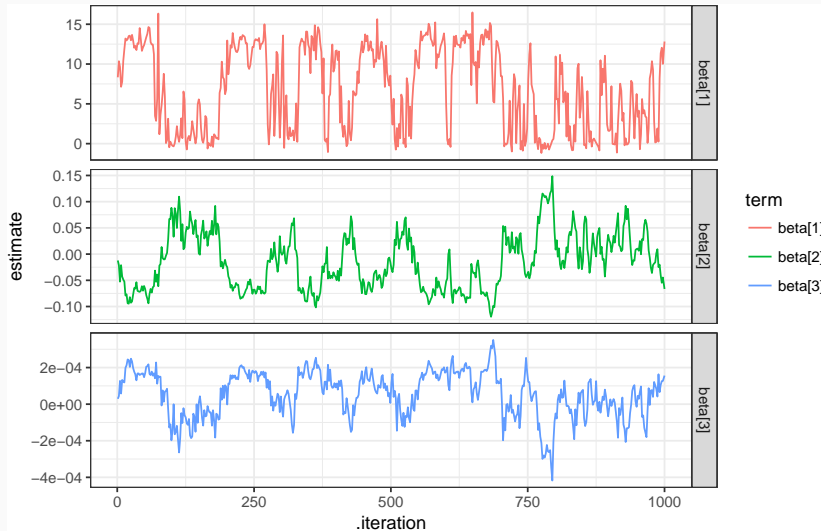
  for (i in 1:N) {
    mu[i] <- beta[1]+ beta[2] * x[i] + beta[3] * x[i]^2
  }

  for (i in 1:(N-1)) {
    for (j in (i+1):N) {
      Sigma[i,j] <- sigma2 * exp(- pow(l*d[i,j],2))
      Sigma[j,i] <- Sigma[i,j]
    }
  }

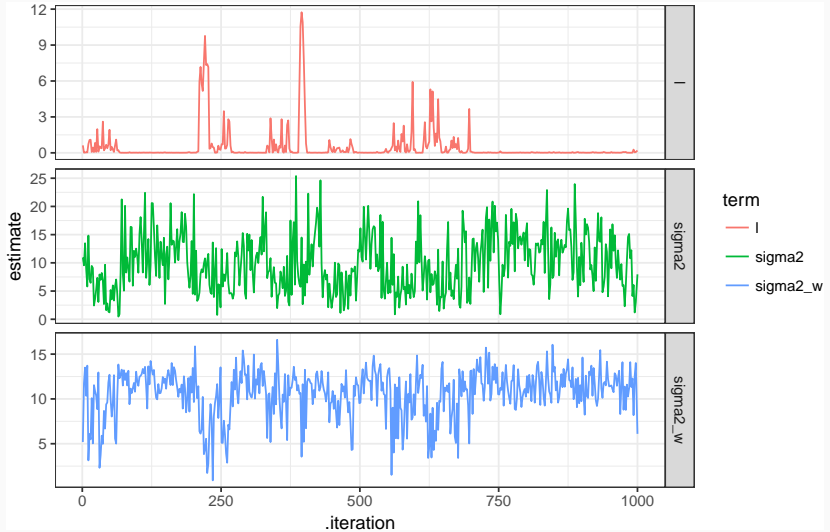
  for (k in 1:N) {
    Sigma[k,k] <- sigma2 + sigma2_w
  }

  for (i in 1:3) {
    beta[i] ~ dt(0, 2.5, 1)
  }
  sigma2_w ~ dnorm(10, 1/25) T(0,)
  sigma2    ~ dnorm(10, 1/25) T(0,)
  l         ~ dt(0, 2.5, 1) T(0,)
}"
```

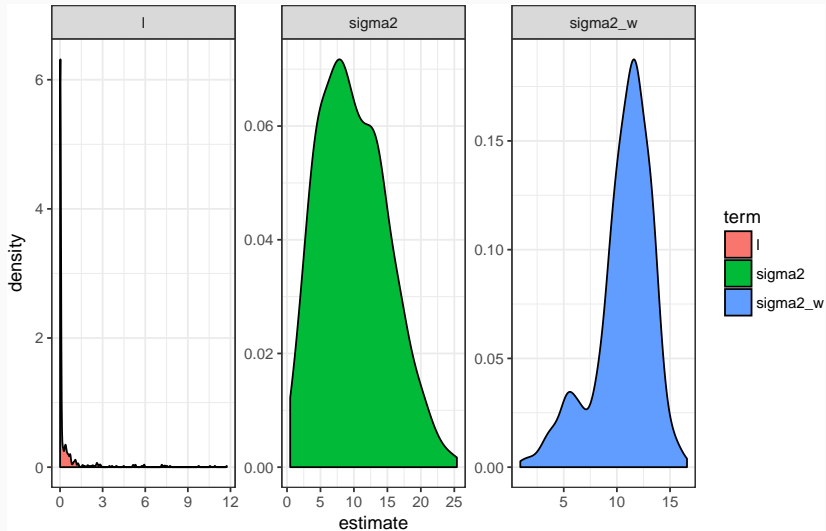
Posterior - Betas



Posterior - Covariance Parameters

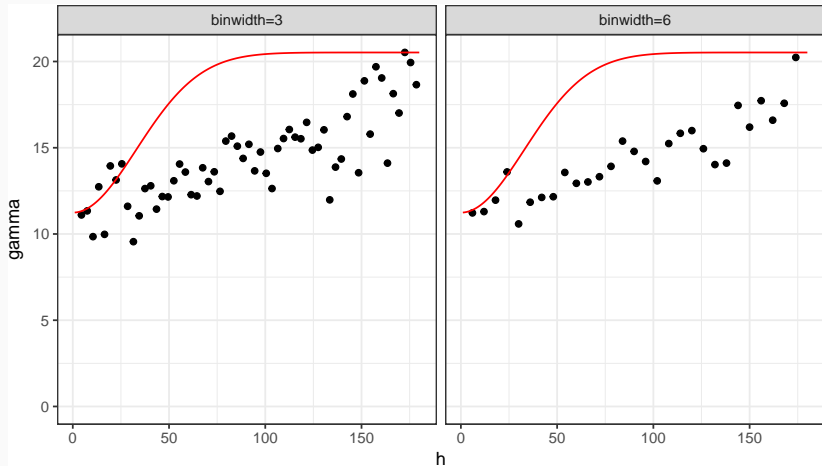


Posterior - Covariance Parameters

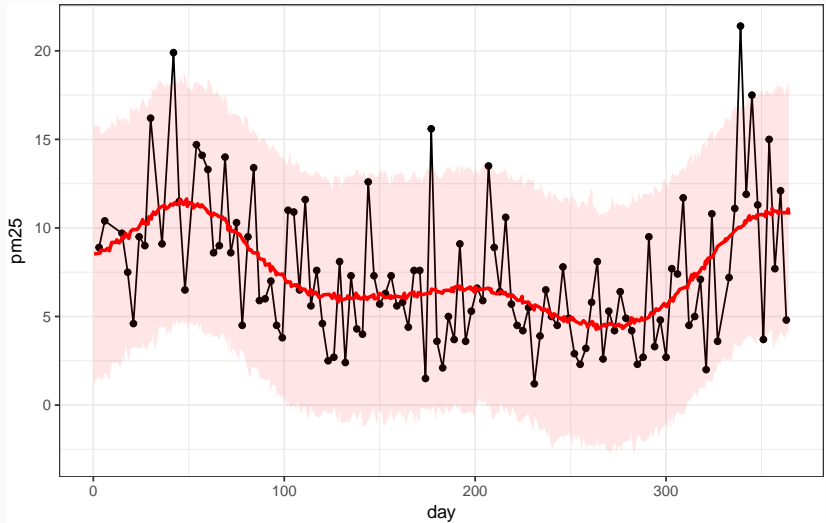


term	post_mean	post_med	post_lower	post_upper
beta[1]	6.922	7.624	-0.720	14.369
beta[2]	-0.015	-0.018	-0.091	0.092
beta[3]	0.000	0.000	0.000	0.000
l	0.462	0.021	0.007	5.303
sigma2	9.862	9.284	1.610	20.555
sigma2_w	10.748	11.239	3.832	14.693

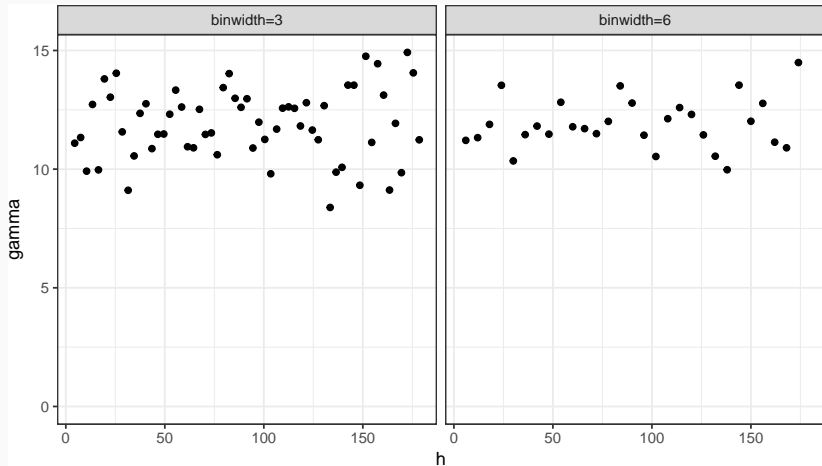
Empirical + Fitted Variogram

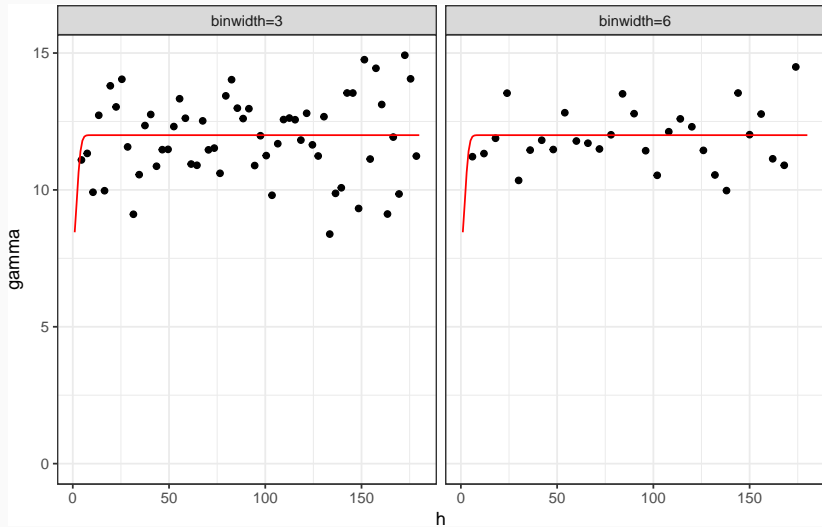


Fitted Model + Predictions

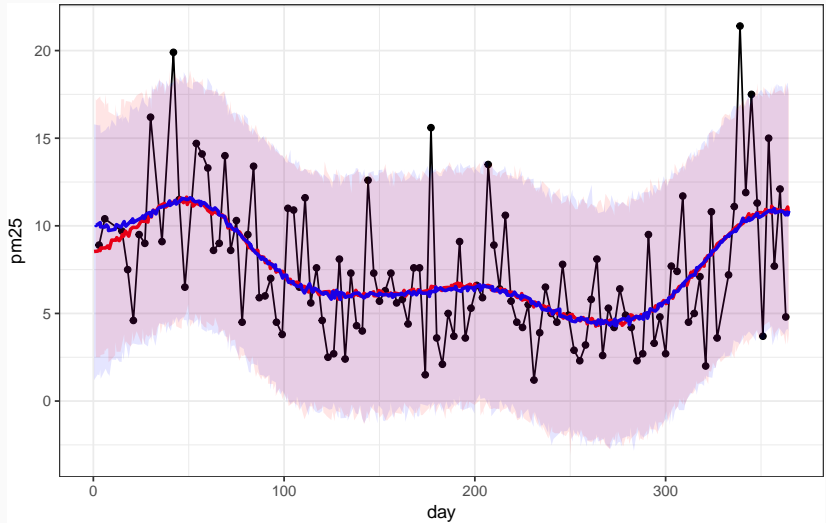


Empirical Variogram Model





Predictions



Full Posterior Predictive Distribution

Plug in Prediction

```
l          = filter(post, term == 'l')           %>% pull(post_med)
sigma2     = filter(post, term == 'sigma2')      %>% pull(post_med)
sigma2_w   = filter(post, term == 'sigma2_w')   %>% pull(post_med)
beta0      = filter(post, term == 'beta[1]')    %>% pull(post_med)
beta1      = filter(post, term == 'beta[2]')    %>% pull(post_med)
beta2      = filter(post, term == 'beta[3]')    %>% pull(post_med)
```

```
reps=1000
```

```
x = pm25$day
y = pm25$pm25
x_pred = 1:365 + rnorm(365, 0.01)
```

```
mu = beta0 + beta1*x + beta2*x^2
mu_pred = beta0 + beta1*x_pred + beta2*x_pred^2
```

```
dist_o = fields::rdist(x)
dist_p = fields::rdist(x_pred)
dist_op = fields::rdist(x, x_pred)
dist_po = t(dist_op)
```

```
cov_o = sq_exp_cov(dist_o, sigma2 = sigma2, l = l) + nugget_cov(dist_o, sigma2 = sigma2, l = l)
cov_p = sq_exp_cov(dist_p, sigma2 = sigma2, l = l) + nugget_cov(dist_p, sigma2 = sigma2, l = l)
cov_op = sq_exp_cov(dist_op, sigma2 = sigma2, l = l) + nugget_cov(dist_op, sigma2 = sigma2, l = l)
cov_po = sq_exp_cov(dist_po, sigma2 = sigma2, l = l) + nugget_cov(dist_po, sigma2 = sigma2, l = l)
```

```
inv = solve(cov_o, cov_op)
cond_cov = cov_p - cov_po %*% inv
```

Our posterior consists of samples from

$$l, \sigma^2, \sigma_w^2, \beta_0, \beta_1, \beta_2 \mid \mathbf{y}$$

and for the purposes of generating the posterior predictions we sampled

$$\mathbf{y}_{pred} \mid l^{(m)}, \sigma^{2(m)}, \sigma_w^{2(m)}, \beta_0^{(m)}, \beta_1^{(m)}, \beta_2^{(m)}, \mathbf{y}$$

where $l^{(m)}, \dots, \beta_2^{(m)}$, etc. are the posterior median of that parameter.

Full Posterior Predictive Distribution

Our posterior consists of samples from

$$l, \sigma^2, \sigma_w^2, \beta_0, \beta_1, \beta_2 \mid \mathbf{y}$$

and for the purposes of generating the posterior predictions we sampled

$$\mathbf{y}_{pred} \mid l^{(m)}, \sigma^{2(m)}, \sigma_w^{2(m)}, \beta_0^{(m)}, \beta_1^{(m)}, \beta_2^{(m)}, \mathbf{y}$$

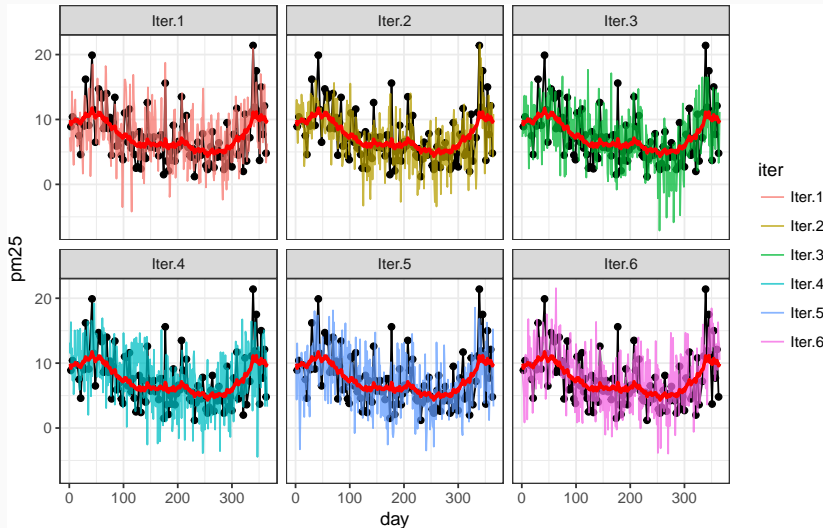
where $l^{(m)}, \dots, \beta_2^{(m)}$, etc. are the posterior median of that parameter.

In practice we should instead be sampling

$$\mathbf{y}_{pred}^{(i)} \mid l^{(i)}, \sigma^{2(i)}, \sigma_w^{2(i)}, \beta_0^{(i)}, \beta_1^{(i)}, \beta_2^{(i)}, \mathbf{y}$$

since this takes into account the additional uncertainty in the model parameters.

Full Posterior Predictive Distribution - Plots



Full Posterior Predictive Distribution - Median + CI

